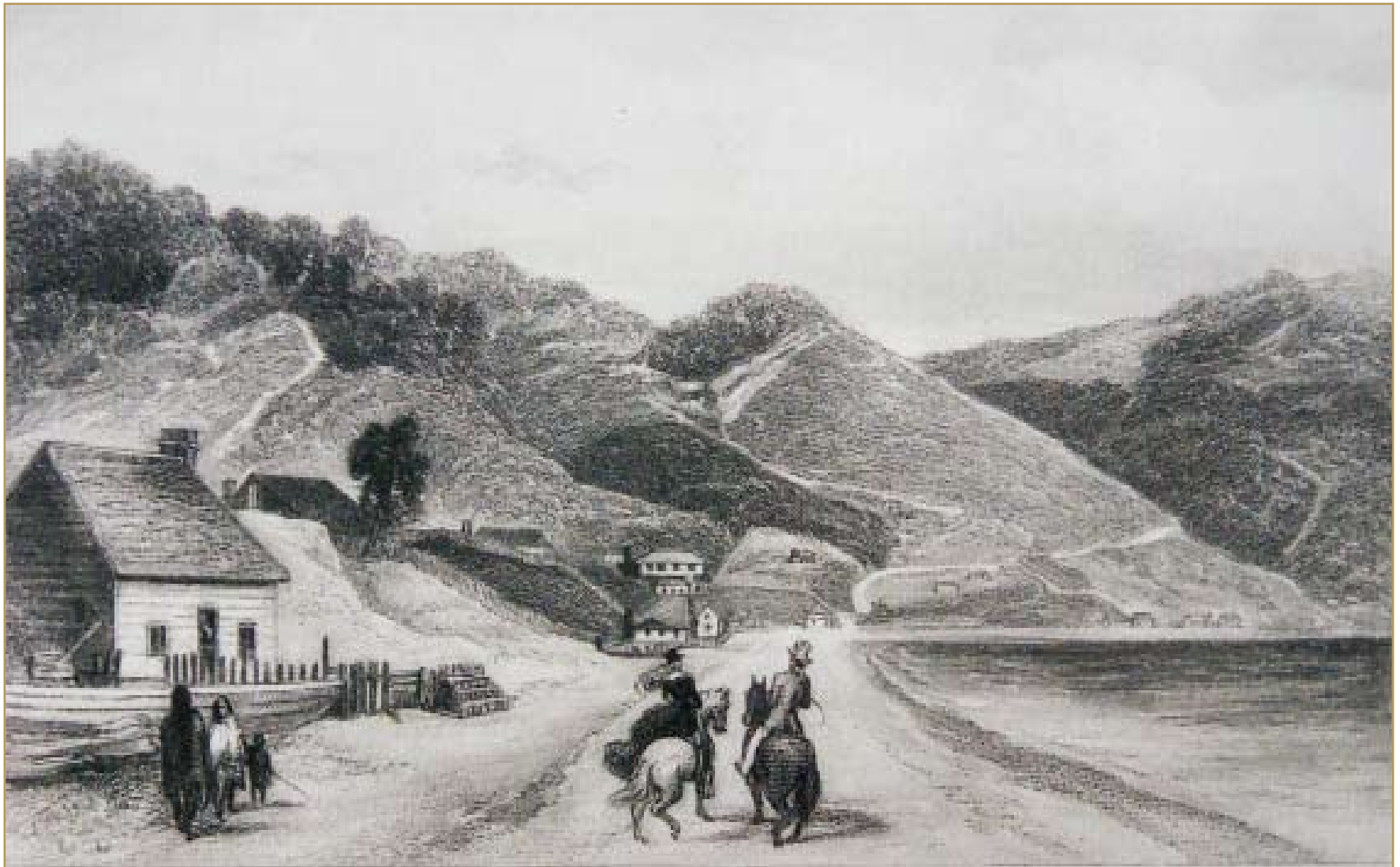




PALLISER BAY & THE SAND BAR OF THE WAIRARAPA



THE BEACH NEAR MAJOR BAKER'S RESIDENCE, WELLINGTON.



PITONE PA WELLINGTON



FORT RICHMOND & THE RUFF BRIDGE.



POHEWA HARBOUR



VIEW OF EAST SLOPE OF MOUNT HILL FROM WEST OF THE LOWER FALLS