

## **AFFORDABLE ART 22 SEPT**

### **Auction Date & Time**

11:00am Wednesday 22nd September 2010

### **Auction Venue**

Scarborough Gallery, International Art Centre  
Lower Ground Level 272 Parnell Road, Auckland

### **Viewing Times**

Sunday            19th September 1:00pm - 4:00pm  
Monday           20th September 9:00am - 5:00pm  
Tuesday          21st September 9:00am - 5:00pm  
Wednesday      22nd September 9:00am - 10:30am

Other times by appointment



**International Art Centre**

---

272 Parnell Road Auckland New Zealand Tel +64 9 379 4010 [www.fineartauktion.co.nz](http://www.fineartauktion.co.nz)  
THE ONLY AUCTIONEERS OF PICTURES EXCLUSIVELY

## Conditions of Sale

The highest bidder shall be the buyer. In the event of any dispute as to the bidding in respect of any lot, that lot may be offered again at the discretion of the auctioneer whose decision shall be absolute and final.

The auctioneer has the right:

- to refuse any bid;
- to advance the bidding at his absolute discretion;
- to place a reserve on any lot;
- to place a bid or bids on behalf of the seller;
- to withdraw any lot from sale;
- to require a successful bidder to pay forthwith the whole or any part of the purchase price

The auctioneer acts as the agent of the seller and neither he nor the seller shall be responsible for any defects or faults in any lot or for any errors of description or for genuineness or authenticity of any lot and no compensation shall be paid in respect of same.

From the time of lot being sold, such lot will be the responsibility of the buyer.

Successful bidders are required to pay for purchases immediately on completion of sale, unless otherwise arranged. Payment to be made by cheque, bank cheque, telegraphic transfer, eftpos or cash.

Each lot shall be paid for and removed at the buyers expense within 24 hours of the auction failing which the auctioneer and/or the seller shall have the right to forfeit any deposit paid by the buyer and to resell the lot either by public or private sale and any deficiency on costs of resale shall be borne by the defaulting buyer.

Bids placed via the website are absentee bids - These bids are made through the auctioneer who will execute to purchase as cheaply as permitted by other bids. Absentee bids are also accepted by fax (09) 307 3421. We are not accepting telephone bidding for this auction.

### Payment Facilities

Eftpos: Available for transactions \$2,000 or less which is the banks daily limit. For transactions less than \$4,000 a 50% deposit on the evening and balance following morning is acceptable as long as the goods remain on our premises.

Bank deposits: Please ask for our bank details to be faxed or emailed if you wish to pay by direct debit. Quote the Lot number(s)

Cheques: Accepted by known clients of International Art Centre or at our discretion. When posting cheques please ensure they are sent to the following address:

International Art Centre  
PO Box 37 344  
Parnell,  
Auckland 1151.

Make cheque payable to International Art Centre

Credit cards: 2% surcharge applies to Visa & Mastercard. American Express not accepted.

N.B. 15.% Buyers premium plus GST (16.87% total) on premium applies to all items purchased.

**No lot may be collected or paid for whilst auction is in progress.**





179



171



3



170



78



42



105



119





1



18



21



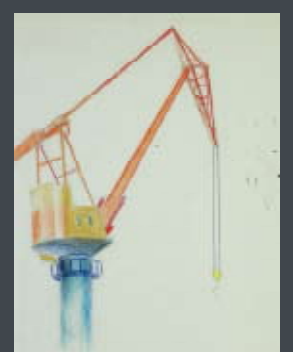
9



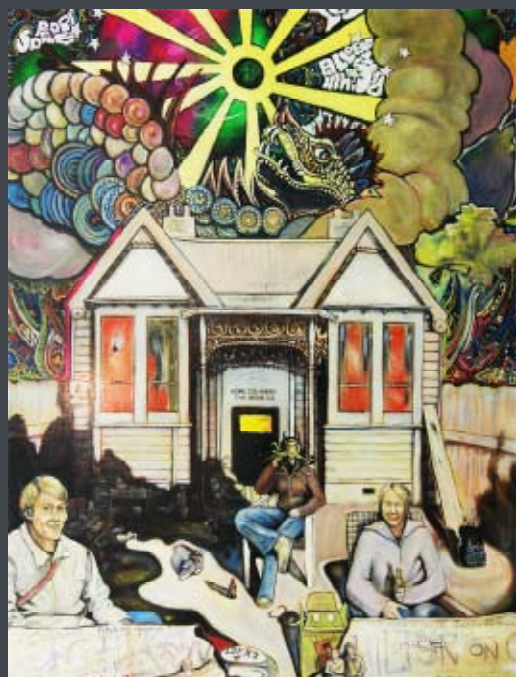
10



11



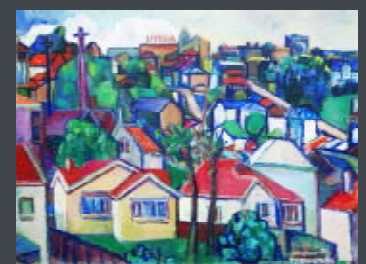
20



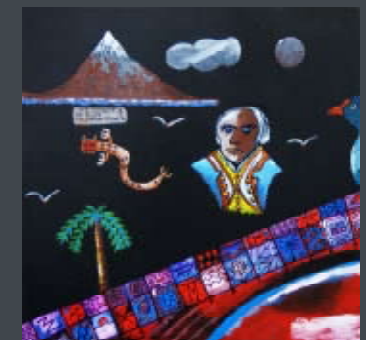
33



35



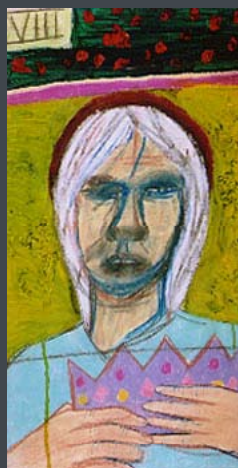
38



41



57



153



61



128



44

1. KEES HOS 'Aotearoa - I' Screenprint 52 x 68, Signed & inscribed
2. KEES HOS 'Aotearoa - II' Screenprint 52 x 68, Signed & inscribed
3. RODNEY FUMPSTON 'Fireclouds' Pastel on paper 49 x 63, Signed & inscribed
4. JULIET PETER 'Bush' Lithograph edition of 30, 65.5 x 46.5, Signed, inscribed & dated 1968
5. JULIET PETER 'Fern Complex' Lithograph edition of 30, 47 x 50, Signed, inscribed & dated 1972
6. DES ROBERTSHAW 'Transition Series' Acrylic on board 72 x 91, Signed
7. MARCUS KING 'Lyttleton' Oil on board 24.5 x 30, Signed
8. DON BINNEY 'Nude Study' Charcoal on paper 45 x 28, Signed & dated 1979
9. PEGGY SPICER 'Queens Head Tavern, Opposite Auckland Town Hall' Watercolour 28 x 25, Signed
10. PEGGY SPICER 'Albert Park' Watercolour 30.5x 26.5, Signed
11. PEGGY SPICER 'Georgina Street, Freemans Bay' Watercolour 21.5 x 27.5, Signed
12. PEGGY SPICER 'Arrowtown' Watercolour 23 x 34.5, Signed
13. PEGGY SPICER 'Old Houses, Freemans Bay' Watercolour 36 x 39, Signed
14. PEGGY SPICER 'Glenmore Lodge 1960' Watercolour 28.5 x 41, Signed
15. ROGER MORRIS 'Auckland Waterfront' Watercolour 52.5 x 73.5, Signed
16. WAYNE SEYB 'Self Portrait & Portrait of Allyson' Woodcut edition of 15, 40 x 48, Signed & dated 1987
17. RODNEY FUMPSTON 'Garden Evening 6' Etching AP,49 x 45, Signed
18. FATU FEU'U 'Masina' Lithograph edition of 30, 62 x 76, Signed, inscribed & dated 1989
19. LOUISE HENDERSON 'Auckland Harbour Cranes' Mixed media on paper, 38 x 28,Cert of Authenticity verso
20. LOUISE HENDERSON 'Auckland Harbour Crane' Mixed media on paper, 38 x 28,Cert of Authenticity verso
21. PARATENE MATCHITT 'Untitled XIV' Ink on paper, 26 x 36,Signed
22. HENRY SYMONDS 'Abstract (Pair)' Acrylic & gold leaf on board, 41 x 40, Signed & dated 1997
23. DON DRIVER 'Portrait of a Girl' Pastel on paper, 60 x 47, Signed & dated 1961
24. DENYS WATKINS 'Untitled' Screenprint edition of 116,38 x 54, Signed
25. MICHAEL TUFFERY 'Taata Ahu' Screenprint edition of 126,75 x 54, Signed, inscribed & dated 1995
26. PHILIPPA BLAIR 'Destination' Screenprint edition of 126, 54 x 75, Signed, inscribed & dated 1995
27. PHILLIPA BLAIR 'Transformation' Screenprint edition of 126, 54 x 75, Signed, inscribed & dated 1995
28. FATU FEU'U 'I'a Faiatalofa' Screenprint edition of 126, 55 x 75, Signed, inscribed & dated 1995
29. ALEXIS NEAL 'Aspire' Lithograph edition of 5, 52x 33, Signed & inscribed
30. TONY BROWN 'Halfway' Acrylic on board, 61 x 90, Signed
31. DON PACKWOOD 'Monte Carlo Grand Prix, 1933' Oil on canvas, 75 x 100, Signed & dated 2000
32. IAN SCOTT 'Lion Rock, Piha, Summer' Oil on board, 55 x 74, Signed. Inscribed verso
33. GUY HOWARD SMITH 'Castle Street, Dunedin' Oil on board, 122 x 90, Inscribed
34. RODNEY FUMPSTON 'Pyramids (3) - Egypt Series' Lithographs, 40 x 49, Signed, inscribed & numbered
35. RUTH COLE 'Garden Path' Oil on canvas,117 x 138, Signed & dated 1987 verso
36. LOUISE HENDERSON 'School Journal Illustrations,Original sketch for NZ school Journal, 1949' 19 x 30
37. LOUISE HENDERSON 'Animals: Bird, Rabbit, Fish, Butterfly, Dolphin & Polar Bear' Original sketch for NZ school Journal, 1949,18 x 31.5
38. IAN KINGSTONE 'City View' Oil on board, 59 x 80, Signed & dated 1991
39. BRUCE HARVEY 'Banded Dotterel' Watercolour, 31 x 50, Signed & dated 1969
40. MICHAEL SMITHER 'Light Behind Islands' Pencil on paper,17.5 x 26, Signed & dated 1973
41. ALAN TAYLOR 'Captain James Cook' Oil on canvas, 30 x 30, Signed
42. JOHN GERRARD KEULEMANS 'Sedge Warbler' Watercolour, 22 x 15, Signed
43. PETER MORIARTY 'Lake Manapouri' Oil on board, 34 x 44, Signed
44. CHARLES MCPHEE 'Nani' Oil on velvet, 96 x 72, Signed & inscribed
45. JOHN DOUGLAS PERRETT 'Evening in Taupo' Pastel, 35 x 52.5, Signed
46. IDA H CAREY 'Artist's Friend' Oil on board, 55 x 40,S igned & dated 1941
47. IDA H CAREY 'St Bathans, Otago' Oil on board, 38 x 40, Signed
48. IDA H CAREY 'The Gathering' Oil on board, 52.5 x 67.5
49. IDA H CAREY 'Gerberas' Oil on board, 37 x 46, Signed
50. TIM WILSON 'Early Mist, Doubtful Sound' Oil on canvas, 40 x 50, Signed



51. PETER MORIARTY 'Fox Glacier Pool' Oil on board, 65.8 x 59, Signed
52. JOHN CASTLE 'The Lemonade Sellers' Oil on board, 75 x 54, Signed
53. K W HASSALL 'Macrocarpa I' Oil on canvas board, 24 x 29.5
54. K W HASSALL 'Macrocarpa II' Oil on canvas board, 24 x 29.5
55. SCHOOL OF JOHN BARR CLARKE HOYTE 'Judges Bay' Watercolour, 16.5 x 30, Dated 1919
56. JUDITH MORETON 'Whangaparaoa Bay' Oil on board, 42 x 58, Signed & dated 1987
57. PABLO PICASSO 'Illustrations for Le Celestine,P. 16 27.5.68' Sugar aquatint, 25 x 18.5, Dated 27.5.68
58. RUSSELL HOLLINGS 'Manuka Grove' Oil on board, 25 x 18.5, Signed & dated 1974
59. ARTHUR THOMPSON 'Freemans Bay Villa' Watercolour & pastel on paper, 47 x 37, Signed & dated 1971
60. C MURRAY 'Interior of Salvation Army, Auckland' Oil on board, 30 x 38, Signed
61. EMILY JACKSON 'In the Ranges' Oil on board,72 x 109, Signed & dated 1984
62. BLYTHE FLETCHER 'Eastern Street Scene' Gouache on paper, 38 x 47.5, Signed
63. PETER J WALLERS 'Rangitikei River near Mangaweka' Oil on board, 53 x 73, Signed & dated 1989
64. MARGARET WOOLEY 'Black and White Landscape - Newark Airport at Night' Diptych on board, 61.5 x 113, Signed verso
65. LANCE O'GORMAN 'Seclusion (Fair Lady Series)' Acrylic on board, 44 x 60, Signed
66. PETER J WALLERS 'Towards Pukawa, Lake Taupo' Oil on board, 14 x 35, Signed & dated 1986
67. PETER J WALLERS 'Mt Ngauruhoe' Oil on board, 26 x 39, Signed & dated 1961
68. ELLEN VON MEYERN 'Maori Woman & Child' Watercolour, 28 x 20, Signed, inscribed Auckland & dated 1904
69. HELEN SANDALL 'Waikato Landscape' Watercolour, 33 x 48.5, Signed
70. PEGGY SPICER 'Mt Ruapehu' Watercolour, 38 x 43.5, Signed
71. RON STENBERG 'Vehicular Ferries, Auckland' Pen and wash on paper, 31 x 51, Signed
72. J MAYCLAIR 'Coastal Road' Oil on paper,18 x 35, Signed
73. LILY LEWIS 'Flowers in Vase' Watercolour, 55 x 38, Signed
74. LILY LEWIS 'Blue Flowers' Watercolour, 57 x 40, Signed
75. RICHARD CHRISP 'Sunflowers & Sheep, Coromandel II' Watercolour, 40 x 48, Signed
76. WHITES AVIATION PHOTOGRAPH 'View to Rangitoto' Hand coloured photograph, 30 x 37, Signed
77. T J BOND 'Sidi Gaba Mosque Near Alexandria' Watercolour, 41 x 27.5, Signed & dated 1925
78. IAN MCMILLAN 'Number Two, 1972' Watercolour, 59 x 44, Signed
79. ALLEN MADDOX 'Alpha Omega Series' Watercolour, 37 x 37, Signed, inscribed & dated 28/9/89
80. GWYNETH RICHARDSON 'Reflections' Watercolour, 16 x 24, Signed
81. HENRYK SZYDLOWSKI 'Maski' Print A/P, 32 x 32, Signed
82. MINNIE F WHITE 'Coastal View through Trees' Watercolour, 39.5 x 45.5, Signed
83. WILLIAM JAMES REED 'Judas Kiss' Monoprint 71 x 45
84. LILY LEWIS 'Victoria' Pastel on paper, 36.5 x 26, Signed & dated 1965
85. DENNIS KNIGHT TURNER 'Maori Moko Designs C. 1955' Graphite on paper, 27 x 18
86. ASTON GREATHEAD 'The Kaikouras' Oil on board, 39 x 55, Signed & dated 1965
87. PHILIP HOLMES 'The Artist' Oil on board, 22.5 x 16.5, Signed
88. PHILIP HOLMES 'The Connoisseur' Oil on board, 23.5 x 17, Signed
89. IAN SCOTT 'Whangaparaoa Peninsula' Watercolour, 36.5 x 54.5, Signed
90. IAN SCOTT 'Whangaparaoa Peninsula II' Watercolour, 32.5 x 48, Signed
91. HENRYK SZYDLOWSKI 'Sleepwalker' Etching editon of 58, 21 x 14, Signed, inscribed & dated 1988
92. WILLIAM M BARRAUD 'Mid-Summer Morning' Watercolour, 27 x 37, Signed
93. PAUL CONEY 'Early Autumn' Watercolour & ink, 31 x 52, Signed
94. JOHN RUNDLE 'Mt Cook from Gillespie Beach, Westland' Watercolour, 45 x 60, Signed & dated 1978
95. BEATRICE M WHITE 'Taranaki Chief' Pastel on paper, 50 x 33, Signed & dated 1957
96. ANNA FIRTH 'Two Clowns at San Miguel' Watercolour, 75.5 x 55, Signed
97. FLORENCE LUXFORD, 'Summer Bouquet', Oil on canvas, 63, 46, Signed
98. ILENA ROSA, STICHBURY, 'Maori Village, Waikato', Oil on canvas, 29, 44, Signed
99. ARTIST UNKNOWN 'Wanganui River' Oil on canvas, 60 x 50, Inscribed
100. VAN RIJN 'Still Life' Oil on board, 38.5 x 49, Signed

101. GOTTFRIED LINDAUER 'Ana Rupene & Child' Framed reproduction, 55 x 46
102. A E ROWBOTTOM 'Portfolio of three pencil sketches - British Scenes' Pencil on paper, 18 x 25, Together with another drawing by W Smellie
103. PHILIP MARKHAM 'Lake Taupo' Watercolour, 52 x 72, Signed & dated 1985
104. JACQUES ABRAHAM 'Archway, Naples' Oil on board, 41 x 33, Signed
105. LOUISE HENDERSON 'Amman' Pencil on paper, 31 x 25
106. ALEXANDRA NECHITA 'Still Life Composition' Lithograph edition of 199, 72 x 57.5, Signed & dated 1998
107. MERTHER RUXTON 'Nude Study' Pastel on paper, 53 x 76.5, Signed
108. CYRIL WHITEOAK 'Wildlife Park' Watercolour, 37 x 55, Signed & dated 1999
109. CYRIL WHITEOAK 'Wildlife Park, Murray River' Watercolour, 36 x 55, Signed & dated 1999
110. CYRIL WHITEOAK 'Switzerland' Watercolour, 35.5 x 53, Signed & dated 1955
111. CYRIL WHITEOAK 'Catalina Island, USA' Watercolour, 36 x 51, Signed & dated 1988
112. CYRIL WHITEOAK 'Pembroke Castle' Watercolour, 35.5 x 54, Signed & dated 1990
113. CYRIL WHITEOAK 'River Murray at Walker's Flat' Watercolour, 36 x 53.5, Signed
114. CYRIL WHITEOAK 'Wanganui River Meets Rough Sea' Watercolour, 35 x 51, Signed & dated 1987
115. CYRIL WHITEOAK 'Cottage Near Chichester' Watercolour, 37 x 54, Signed & dated 1971
116. JOHN GULLY 'Manawatu Gorge' Chromolithograph, 31 x 38.4, Signed
117. ARTIST UNKNOWN 'Coastal Scene - Possibly Honolulu' Watercolour, 18 x 48
118. HOWARD SMITH 'Fishing Boats, Viaduct' Watercolour, 32 x 49, Signed
119. RUSSELL JACKSON 'Stony Batter' Acrylic on paper, 67 x 47, Signed, inscribed & dated 1992
120. CHRIS BOOTH 'Potuku' Pencil drawing, 28 x 39, Signed, inscribed & dated 1983
121. ARTIST UNKNOWN 'Old Watermill, Suffolk' Watercolour, 22 x 33
122. E K ROBINSON 'Hori' Mixed media on paper, 17 x 17, Signed & inscribed
123. W TREWEEK 'After School & Shopping - A Pair' Oil on board, 36 x 28, Signed
124. W GUNN 'Southern Lake Scene' Watercolour, 16 x 33, Signed
125. ALISON PICKMERE 'Bush Forms Series III' Lithograph, 37 x 49, Signed, inscribed & dated 1968
126. BRUCE HARVEY 'Grey Warbler' Silkscreen print edition of 500, 55 x 46, Signed & inscribed
127. WILLIAM SANDS 'St Michael's Mount' Watercolour, 18 x 30, Signed
128. CHARLOTTE GRAHAM 'Kei Maunawa' Mixed media, 53 x 77, Signed
129. JAMES K BAXTER 'Pinetrees in the Key of F & A Rose in the Key of G' Solar plate, etching and woodblock on Hahnemuhle paper, 35 x 26
130. W A MACCORMICK 'Tasman Bay at Onehunga Wharf' Oil on canvas, 31 x 39, Signed & dated 1994
131. BARBARA BLAKEMORE-FOWLER 'Canterbury Stream' Watercolour, 32 x 24, Signed & dated 1992
132. CHRISTINE ZAMBUCKA 'Maori Woman & Child' Pastel on paper, 65 x 50, Signed & dated 1974
133. ESMOND HURWORTH ATKINSON 'Looking Down on Kaikoura' Watercolour, 25 x 35, Signed, Inscribed verso
134. ESMOND HURWORTH ATKINSON 'Wellington Harbour from Korokoro' Watercolour, 27.5 x 39, Inscribed verso
135. DENNIS ROXBY BOTT R.W.S. 'Brighton Pier' Watercolour, 24.5 x 46, Signed & dated 1986
136. TOM BURNETT 'Mangonui Entrance' Screenprint edition of 180, 46 x 48, Signed, inscribed & dated 1994
137. HARRY SMITH 'Mesopotamia, High Country' Oil on board, 60 x 90, Signed & dated 1971
138. JANE GRAY 'Musician' Oil on canvas, 121 x 81, Signed
139. PAULINE O'SULLIVAN 'Rainbow Point, Taupo' Watercolour, 34.5 x 49, Signed
140. BEN WOOLCOMBE 'Roma' Watercolour, 35 x 25, Signed & dated 1985
141. SHIGEO MATSUKI 'Cityscape' Acrylic on board, 89 x 71, Signed & dated 1961
142. NEW ZEALAND SCHOOL 'Maori Chief Tamati' Oil on canvas, 32.5 x 23.5, Signed
143. NEIL BARRAUD 'Valley West' Watercolour, 20 x 32, Signed
144. PETER O'HAGAN 'Le Restaurant' Gouache on paper, 46 x 36, Signed
145. NUGENT WELCH 'Sinclair Head' Watercolour, 26.5 x 36.5, Signed
146. NUGENT WELCH 'Rocky Shore, Cook Strait' Watercolour, 17 x 24, Signed
147. L E BAIRD 'A Peep of the Harbour' Watercolour, 36 x 25.5, Signed
148. ANNETTE ISBEY 'Jetty & Cottage' Oil on board, 60 x 59.5, Signed
149. THOMAS SIDNEY 'Bosham, Sussex' Watercolour, 24 x 44, Signed, inscribed & dated 1907

150. ARTIST UNKNOWN 'Kenwood House, Hampstead Heath, North London.' Oil on board, 26 x 34
151. ROY DALGARNO 'Blue Nude' Etching over calligraph edition of 30, 50 x 60, Signed
152. ROY DALGARNO 'Untitled' Ink & watercolour wash, 40 x 57, Signed & dated 1975
153. JEFFREY HARRIS 'Girl's Head' Oil & pastel on paper, 68 x 41
154. SIR ROBERT KER PORTER 'Ulswater Lake with Porterdale Church' Watercolour, 18 x 22.5
155. ABRAHAM HULK 'Morning Walk' Watercolour, 23 x 31, Signed
156. COPLEY FIELDING 'View of Exmouth November 4 1828' Watercolour, 24 x 36, Signed & dated 1828
157. ARTIST UNKNOWN 'Lunch' Watercolour, 21 x 17
158. IDA EISE 'A Study' Pencil drawing, 13.5 x 11, Signed, inscribed & dated 16.12.19
159. JOHN HOLMWOOD 'The Plunge' Ink on paper, 44 x 35, Signed & inscribed
160. JOHN MCINTOSH MADDEN 'Bealey Valley' Watercolour, 20 x 28, Signed
161. GORDON MINHINNICK 'Strange Fish' Ink on paper, 26 x 41, Signed
162. BLYTHE FLETCHER 'North African Village Scene' Gouache on paper, 48 x 32, Signed
163. JOS KIVITS 'Wainui Farm' Oil on panel, 27 x 18, Signed & dated 1975
164. IVY PERRY 'Pakuranga Fields Towards Mt Wellington' Watercolour, 35.5 x 50, Signed & inscribed verso
165. NIGEL BROWN 'Summer at Thames' Woodcut edition of 5, 68 x 36, Signed, inscribed & dated 1983
166. D MACDIARMID 'Notre-Dame Cathedral, Paris' Watercolour, 16 x 14, Signed
167. M H MEYRICK 'The Watchman' Watercolour, 41 x 28, Signed
168. RUTH COYLE 'The Chesil Bank, Portland Bill' Oil on board, 43.5 x 60, Signed & dated 1964
169. GWYNETH RICHARDSON 'Rural Landscape' Watercolour, 27 x 37, Signed
170. CHARLES GAUTIER 'LLangrannog' Etching AP, 49 x 30, Signed & dated 1976
171. HEINZ 'Auckland Viaduct Circa 1955' Oil on board, 44 x 54, Signed
172. PETRUS VAN DER VELDEN 'Quayside Street Scene - Dordrecht, Holland, 1870' Watercolour & pencil, 42 x 56, Signed
173. WILLIAM EARP 'Loch Osmond' Watercolour, 55 x 78, Signed
174. JAMES ORROCK 'Water Mill' Watercolour, 22.5 x 31
175. LEONARD RICHMOND 'River, Surrey' Oil on canvas, 40 x 50, Signed
176. FRANK BROOKESMITH 'Lake Scene' Watercolour, 20 x 33, Signed & dated 1984
177. ARTIST UNKNOWN 'Portrait' Oil on canvas, 41 x 30
178. DEREK COWIE 'Untitled' Oil on canvas, 27 x 34
179. ALEXIS NEAL 'Exchange for the Musket' Drypoint etching on hahnemuhle paper edition of 20, 41 x 41, Signed & inscribed
180. CHARLES BLOMFIELD 'Maori Canoe Race, Auckland Regatta 1882' Print, 35 x 88, Signed & dated 1882
181. WILLIAM JAMES PERCIVAL 'Humboldt Range from Diamond Lake' Watercolour, 36 x 49, Signed, inscribed & dated 1893
182. W J REED 'Morning Light (Taylors Mistake)' Watercolour, 35.5 x 39, Signed
183. ARTIST UNKNOWN 'Man with Beret' Watercolour, 30 x 24
184. ERIC MINOR 'Nude Study' Watercolour, 61 x 54, Signed & dated 1977
185. B JACKSON 'Flowers in a Green Vase' Watercolour, 48 x 40, Signed
186. B JACKSON 'Bouquet' Watercolour, 42 x 32, Signed
187. CHARLES HENRY HOWORTH 'Serpentine Bridge, Hyde Park' Watercolour, 25 x 35, Signed
188. RAILWAYS STUDIOS 'New Zealand South Island' Lithographic travel poster, 102 x 57.5
189. RAILWAYS STUDIOS 'Wanganui River' Lithographic travel poster, 100 x 62
190. ROSANO FAN 'Untitled - Homage to Woollaston' Oil on board, 74 x 100, Signed
191. BASIL HONOUR 'Coastal Scene' Oil on board, 37 x 49, Signed
192. ARTIST UNKNOWN 'Wairua Falls' Engraving, 13 x 14.5
193. MABEL STILL 'Russian Landscape' Watercolour, 14 x 19, Signed
194. SUZANNE GOLDBERG 'Figure in Blue' Mixed media, 18 x 16, Signed
195. WILLIAM GEORGE BAKER 'Buller, Near Nelson' Watercolour, 16.8 x 25.8, Signed
196. B JACKSON 'Vase of Flowers' Watercolour, 20 x 25, Signed
197. FRANCES HODGKINS 'Summer Circa 1912' Printed reproduction, 41 x 35, Signed



198. ARTIST UNKNOWN 'Botanical Study' Watercolour, 21 x 12
199. GRAFTON FASHIONS 'Tailoring de Luxe' Lithographic poster, 40 x 29, Inscribed
200. ALBRECHT DURER 'A Young Hare' Printed reproduction, 24.5 x 21.5, Signed & dated 1503
201. R SPIRO 'Lake Scene' Oil on canvas, 45 x 72, Signed
202. ARTIST UNKNOWN 'Dieppe' Watercolour, 19.5 x 30.5, Inscribed Dieppe
203. KEES HOS 'Tis Fate' Etching, 49 x 24, Signed & dated 1962
204. ARTIST UNKNOWN 'Untitled' Linocut, 44 x 44, Signed
205. J R AYERS 'Banks Peninsula' Oil on board, 33 x 44.5, Signed & dated 1949
206. CHARLES MCKENZIE 'Coronet Peak, Late Afternoon, From Hunters Road, Speargrass Flat' Oil on board, 41 x 51, Signed & dated 1962
207. H T GARRATT 'Lake Scenes - A Pair' Oil on board, 41 x 29
208. ARTIST UNKNOWN 'Mayor of Newcastle' Watercolour, 24 x 17.5, Inscribed
209. J A NEAME 'The Certosa, Watercolour, 25.5 x 19.5
210. ARTIST UNKNOWN 'Gandria - Lago Di Lagano' Watercolour, 27 x 21.5, Inscribed
211. EWALD NAMATJIRA 'Blue Hills' Watercolour, 26 x 22, Signed
212. HARRY LINLEY RICHARDSON 'Portrait of a Lady' Pencil on paper, 26 x 19, Signed
213. CHARLES HENRY HOWORTH 'Cottage near Mt Cook' Watercolour, 24 x 34, Signed
214. JAN VAN FUCHT 'Nude' Watercolour, 17 x 9.2, Signed
215. ARTIST UNKNOWN 'Cannes' Watercolour diptych, 17.3 x 50, Inscribed
216. A MONTAGUE 'Mediterranean Scenes - A Pair' Watercolour, 27 x 17, Signed
217. FAY LEES 'Three East Coast Landscapes' Watercolour, Signed
218. RAYMOND CHING 'The Bird Paintings' Book, 48 x 33, With text by David Snow, A H Chisholm & M F Soper
219. SIR HERBERT HUGHES STANTON 'The Old Footbridge' Watercolour, 36.5 x 53, Signed
220. MABEL STILL 'Brione & Monti Trinata' Doublesided Watercolour, 21 x 13.5, Signed & inscribed
221. GEORGE WILLIAM BISSILL 'Bringing Water from the Well' Watercolour, 32.5 x 24.5, Signed
222. ARTIST UNKNOWN 'Canterbury' Oil on board, 59 x 86
- 223 EDWARD HERBERT KINDLEYSIDES 'Makarau Creek, Kaukapakapa ' Mixed media on paper, 36 x 71, Signed verso
224. LILY LEWIS 'Anne' Pastel on board, 36 x 30, Signed & dated 1968
225. LAURENCE WILLIAM WILSON ATTRIBUTED 'Haymaking' Watercolour, 26 x 36, Signed
226. ARTIST UNKNOWN 'Coastal Scene' Watercolour, 16.5 x 25
227. B JACKSON 'Flowers' Watercolour, 24 x 30.5, Signed
228. W STEWART 'Sail & Stream' Watercolour, 14 x 18.5, Signed
229. WALLACE BUCKLEY 'The Pointer' Pencil drawing, 19 x 14, Signed
230. JONATHAN WHITE 'Jonathan White's New Zealand' Book, 32 x 39, Orakau House Publishers. Text by John Hall-Jones
231. JONATHAN WHITE 'New Zealand's Majestic Wilderness. Fiordland's West Coast Sounds. A Collection of 52 paintings' Book, 32 x 39, Orakau House Publishers. Text by John Hall-Jones
232. G A GENET 'Akaroa' Oil on board, 35 x 55, Signed & dated 1981
233. G A GENET 'McKenzie Country' Oil on board, 29 x 59, Signed
234. G A GENET 'Stone Cottage, McKenzie Country' Oil on board, 18 x 27, Signed
235. JOS KIVITS 'Cherries' Oil on panel, 18 x 23, Signed
236. JOHN SPEEDY 'Afternoon Light on the Anchorage' Oil on board, 36 x 61, Signed
237. MALCOLM, WARR 'Two Shags' Screenprint edition of 23, 77 x 59, Signed
238. PETER BEADLE 'Kawarau River' Oil on board, 29 x 40, Signed
239. T MONTIMEN 'Low Tide' Watercolour, 32 x 53, Signed
240. MICHAEL TUFFERY 'Untitled' Screenprint edition of 80, 69 x 48, Signed, inscribed & dated 1996

# Absentee Bid Form

Affordable Art 11:00am 22 September

Please bid on my behalf for the following lots up to the price recorded below.  
 Bids are to be executed as cheaply as is permitted by other bids or reserves, if any,  
 and subject to conditions of sale printed in this catalogue.

Registration Bidding Number \_\_\_\_\_

Name \_\_\_\_\_

Address \_\_\_\_\_

Telephone Home \_\_\_\_\_ Mob \_\_\_\_\_ Email \_\_\_\_\_

Lot Number	Artist and Title	Bid \$NZ (excl. premium)	

Signature..... / / 2010

International Art Centre offers this service to clients unable to attend sale.  
 International Art Centre is not responsible for error or failure to execute bids.

Fax +64 9 307 3421 or post to PO Box 37344 Parnell, Auckland 1151 before 9am day of auction



**International Art Centre**

272 Parnell Road Auckland New Zealand Tel +64 9 379 4010 [www.fineartauction.co.nz](http://www.fineartauction.co.nz)

THE ONLY AUCTIONEERS OF PICTURES EXCLUSIVELY



# Catalogue Subscriptions

Subscription price	NZ\$	Subscriptions include:
New Zealand	*\$75.00	Fastpost or airmail where applicable
Australia	\$110.00	4 <i>Important, Early &amp; Rare</i> catalogues
Rest of the World	\$155.00	3 <i>Contemporary Foreign &amp; Collectable</i> catalogues
		Pre auction notices & Subscriber previews

GST Increase: Please note New Zealand subscription price will be \*\$77.50 from 1st October, 2010

Name .....

Address .....

Telephone ..... email .....@.....

Please charge my Visa /Mastercard

or find my cheque enclosed (tick one)

Expiry date ...../..... Signature .....

Fax to +64 9 307 3421 or Post to International Art Centre PO Box 37344 Parnell Auckland 1151

Alternatively subscribe online [www.fineartauktion.co.nz](http://www.fineartauktion.co.nz) or

call Toll Free 0800 800 322 with credit card details

*Private Treaty Sales* - Please contact me when works by the following artists are available for sale by private treaty

---

---



**International Art Centre**

272 Parnell Road Auckland New Zealand Tel +64 9 379 4010 [www.fineartauktion.co.nz](http://www.fineartauktion.co.nz)

THE ONLY AUCTIONEERS OF PICTURES EXCLUSIVELY



235



187



215



188



165



55





Index - Wed, 22 Sep, 2010

Artist	Lot			
Abraham J	104		Hodgkins F	197
Atkinson E H	133, 134		Hollings R	58
Ayers J R	205		Holmes P	87, 88
Baird L E	147		Holmwood J	159
Baker W G	195		Honour B	191
Barraud N	143		Hos K	1, 2, 203
Barraud W M	92		Howard Smith G	33
Baxter J K	129		Howorth C H	187, 213
Beadle P	238		Hoyte J B C style of	55
Binney D	8		Hulk A	155
Bissill G W	221		Isbey A	148
Blair P	26, 27		Jackson B	185, 186, 196, 227
Blakemore-Fowler B	131		Jackson E	61
Blomfield C	180		Jackson R	119
Bond T J	77		Keulemans J G	42
Booth C	120		Kindleysides E H	223
Brookesmith F	176		King M	7
Brown N	165		Kingstone I	38
Brown T	30		Kivits J	163, 235
Buckley W	229		Knight Turner D	85
Burnett T	136		Lees F	217
Carey I H	46, 47, 48, 49		Lewis L	73, 74, 84, 224
Castle J	52		Lindauer G	101
Ching R	218		Luxford F	97
Chrisp R	75		MacCormick W A	130
Cole R	35		MacDiarmid D	166
Coney P	93		Madden J M I	160
Cowie D	178		Maddox A	79
Coyle R	168		Markham P	103
Dalgarno R	151, 152		Matchitt P	21
Driver D	23		Matsuki S	141
Durer A	200		Mayclair J	72
Earp W	173		McKenzie C	206
Eise I	158		McMillan I	78
Fan R	190		McPhee C	44
Fashions G	199		Meyrick M H	167
Feu'u F	18, 28		Minhinnick G	161
Fielding C	156		Minor E	184
Firth A	96		Montague A	216
Fletcher B	62, 162		Montimen T	239
Fumpston R	3, 17, 34		Moreton J	56
Garratt H T	207		Moriarty P	43, 51
Gautier C	170		Morris R	15
Genet G A	232, 233, 234		Murray C	60
Goldberg S	194		Namatjira E	211
Graham C	128		Neal A	29, 179
Gray J	138		Neame J A	209
Greathead A	86		Nechita A	106
Gully J	116		O'Gorman L	65
Gunn W	124		O'Hagan P	144
Harris J	153		O'Sullivan P	139
Harvey B	39, 126		Orrock J	174
Hassall K W	53, 54		Packwood D	31
Heinz	171		Percival W J	181
Henderson L	19, 20, 36, 37, 105		Perrett J D	45
			Perry I	164
			Peter J	4, 5
			Picasso P	57
			Pickmere A	125
			Porter R K	154
			Railways Studios	188, 189
			Reed W J	83, 182
			Richardson G	80, 169
			Richardson H L	212
			Richmond L	175
			Robertshaw D	6
			Robinson E K	122
			Rowbottom A E	102
			Roxby Bott D	135
			Rundle J	94
			Ruxton M	107
			Sandall H	69
			Sands W	127
			School N Z	142
			Scott I	32, 89, 90
			Seyb W	16
			Sidney T	149
			Smith H	137, 118
			Smither M	40
			Speedy	236
			Spicer P	9, 10, 11, 12, 13, 14, 70
			Spiro R	201
			Stanton H H	219
			Stenberg R	71
			Stewart W	228
			Stichbury I R	98
			Still M	193
			Symonds H	22
			Szydlowski H	81, 91
			Taylor A	41
			Thompson A	59
			Treweek W	123
			Tuffery M	25, 240
			Van Der Velden attributed P	172
			Van Fucht J	214
			Van Rijn	100
			Von Meyern E	68
			Walters P J	63, 66, 67
			Watkins D	24
			Welch N	145, 146
			White B M	95
			White J	230, 231
			White M F	82
			Whiteoak C	108, 109, 110, 111
				112, 113, 114, 115
			Whites Aviation	76
			Wilson L W	225
			Wilson T	50
			Woolcombe B	140
			Wooley M	64
			Worsley C N	220
			Zambucka C	132

# *Important, Early & Rare*

11 November 2010 **Call for Entries**

## July Highlights



Peter Siddell fetched \$5,000



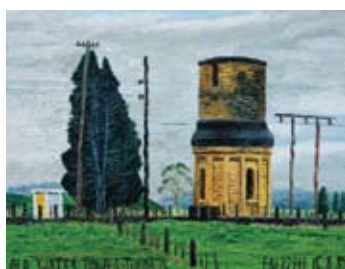
C F Goldie fetched \$195,000



C D Barraud fetched \$45,000



Peter McIntyre fetched \$18,000



Dick Frizzell fetched \$16,000



Lucien Pissarro fetched \$55,000



Maud Sherwood fetched \$3,500



James Peele fetched \$16,000



John Weeks fetched \$25,000



Charles Blomfield fetched \$37,000

Three times per annum International Art Centre hold an Important Early & Rare auction. These sales have met with much enthusiasm in the market, collectors now highly anticipating these special and highly publicised sales. Enter early to ensure acceptance. Another fully illustrated and expertly researched catalogue is currently in preparation. Our experienced and dedicated team are available to discuss inclusion of artworks in this auction. We understand the importance of pre-sale marketing and personal customer service. The catalogue is produced to the highest standard. Because we sell art and only art, vendors are assured of excellent service with full commitment to their requirements.

Toll Free 0800 800 322 Telephone +64 9 379 4010  
info@fineartauction.co.nz www.fineartauction.co.nz



## **International Art Centre**

272 Parnell Road Auckland New Zealand Tel +64 9 379 4010 www.fineartauction.co.nz

THE ONLY AUCTIONEERS OF PICTURES EXCLUSIVELY