

63 Album cover



Memories of Rotoma February 1916





PATAKA - STORE HOUSE. - & WHARE PUHI - SLEEPING HOUSE; MODEL PAN, WHAKA, ROTORUA, N.Z.



SMALL GEYSER, UTILISED FOR COOKING. - OHINIHUTU, ROTORUA, N.Z. 1416-b



AT THE STEAM OVENS, NATIVE RESERVE, WHAKA, ROTORUA, N.Z., 1915; b



TE WAIROA, 1915.
REMAINS OF SOPHIA'S WHARE - MAORI GUIDE, WHO SAVED 50 PEOPLE HERE DURING ERUPTION '85.





ACCOMMODATION HOUSE, WAIHAREKI - ROTORUA, N.Z.



1915-6

AVENUE OF BLUE LUM TREES - ROTORUA TO WHAKAREWAKEWA NATIVE VILLAGE - N.Z.



AVENUE - PUKEROA PARK, ROTORUA, N.Z. 1915-6



NEW BATH-HOUSE, SANATORIUM, GROUNDS, ROTORUA, N.Z. 1916.





BOILING, WHITE, MUD, VOLCANOS, WHAKAREWAREWA, ROTORUA, N.Z.



DIVING, BRIDGE, WHAKAREWAREWA, ROTORUA, N.Z.



DEVIL'S, BLOW-HOLE, BLOWS, EVERY 7 MINUTES, FOR 3, FEB. 1, 1915.
FORE-GROUND, BLEW UP, JUNE 1915; NGW-(1915)-UNAPPROACHABLE.



GEYSERS, PONUTU & THE FEATHERS, WAIKAIPOHUA, N.Z., 1915-6.



CIBRALTER, ROCK. INTERNO WAIMANGU
NEARER VIEW OF WAIMANGU, DAGIN, 1915. - ELKO, LAKE & CRATER. - LE ROTOE & TARAWERA, MT. DOG.



CIBRALTER, ROCK - DEVILS BLOW-HOLE, - BROKEN FOREGROUND, RESULT OF ERUPTIONS APRIL 1891 - NOV. 1915.

WAIMANGU



GREAT RENT, MT. TARAWERA, - PART OF CHASM, 12 MILES LONG, FORMED IN 1886.



HAMURANA SPRING, ROTORUA, N.Z. - BRANTISLOW, CLEAR, ICE COLD, WATER



KA WHU-HOUSS, ST. CHS. - L. WHARE, TEANNEA, MEDEL PAN, WHAKA, ROTORUA, N.Z.



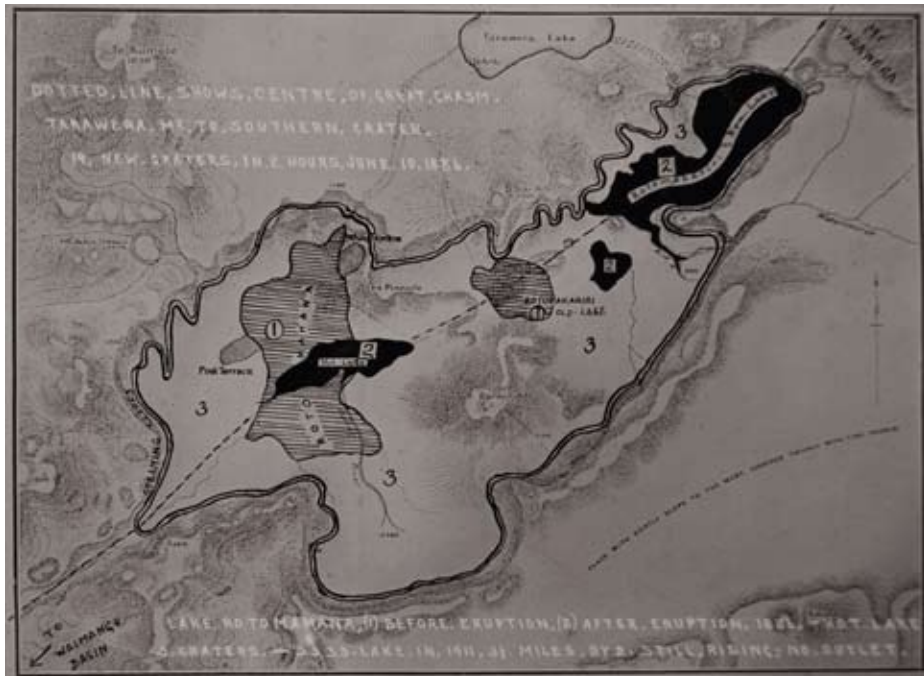
MO-HO, FALL, OKERE, LAKE, ROTOITI,
SUPPLIES
LIGHT & WATER, FOX, ROTORUA, N.Z.



1916.
LAKE, & MT. TARAWERA, SHOWING, 3 CONES, - WIRANGA, - RUAWAHIA - TARAWERA, FROM, TE, WAIROA,



LAKE ROTOMAHANA, 1916. - 700-800 FT. DEEP, FED. BY HOT STREAMS, NO OUTLET, - STILL RISING.



MURDER POOL, NATIVE RESERVE, WHAKAREHARUWA, ROTORUA, N.Z. 1905.



OLD & NEW, CHURCHES - QUEENS, MEMI & ARAWA CHIEFS, TOMB - ORINIMUTO, ROTORUA, N.Z.



HEN, BOB & W-HOLE, DECEMBER 1915 - BANK OF RAILING RIVER - WAIMARU, ROTORUA, N.Z. 1916



THE LOBSTER BATH. 3 TO 75 FT DEEP. HOT. WATER. 2 MILES. FROM. KHEMATIANG. ROTORUA. N.Z.

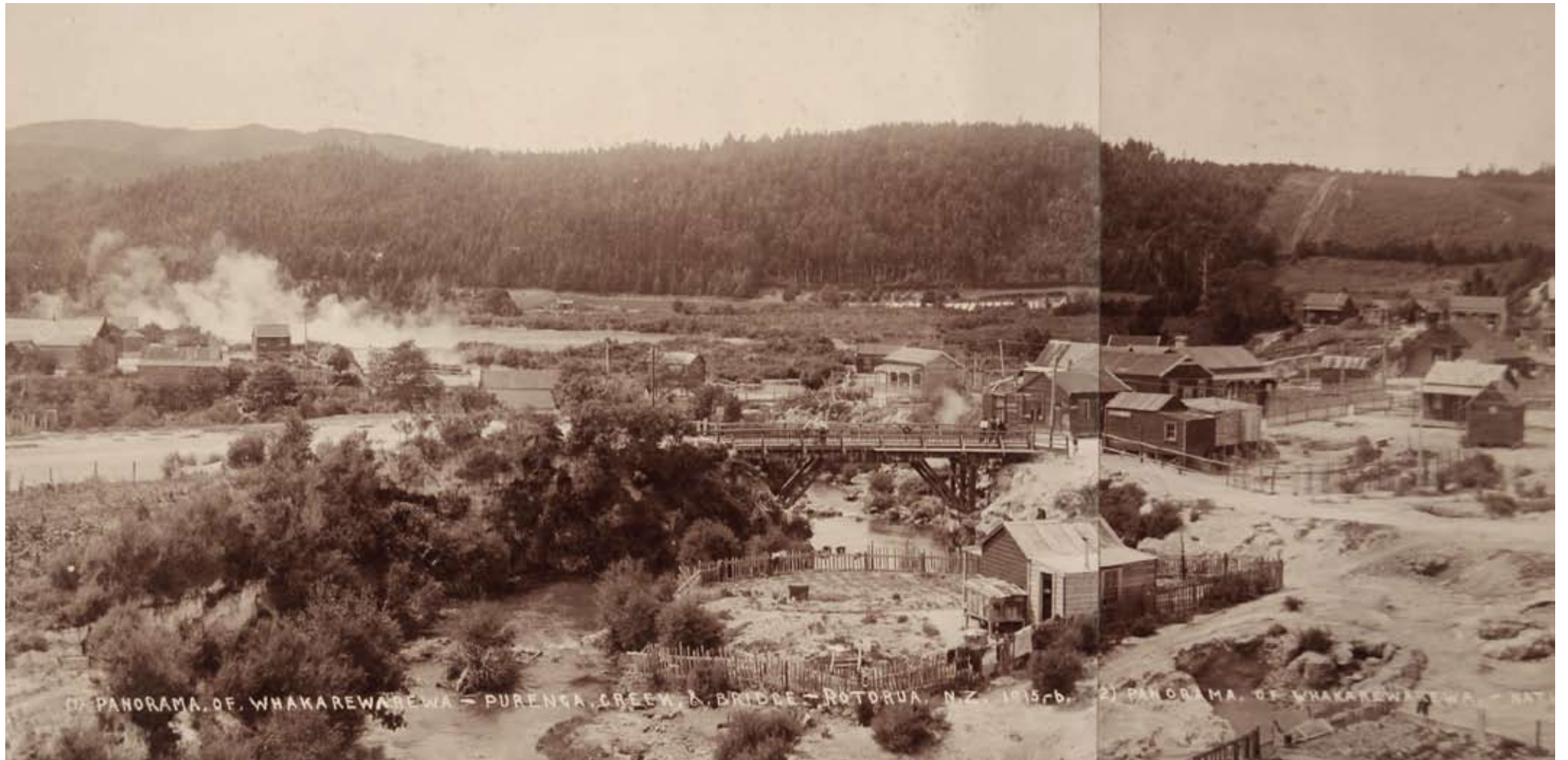


SACRED ALTAR. - TAMAHU, KUHANGAHIU - WAIKAREWAIWA, ROTORUA, N.Z.



1915-8

REMAINS OF ANCIENT. SONKEN. PAU. - PUKERUA. IN. BACKGROUND. - OHINIMUTU ROTORUA. N.Z.



1) PANORAMA OF WHAKAREWAREWA - PURENĀ CREEK & BRIDGE - ROTORUA, N.Z. 1915-c. 2) PANORAMA OF WHAKAREWAREWA - NAT



BOILING LAKE, - SOUNDINGS, FIND, NO. BOTTOM, - OHINIMUTU, ROTORUA, N.Z. 1915.-6.



PAPAKURA, GEYSER, -CONTINUED- & PUPUNGA CREEK, WHAKAREWAREWA, ROTORUA, N.Z.



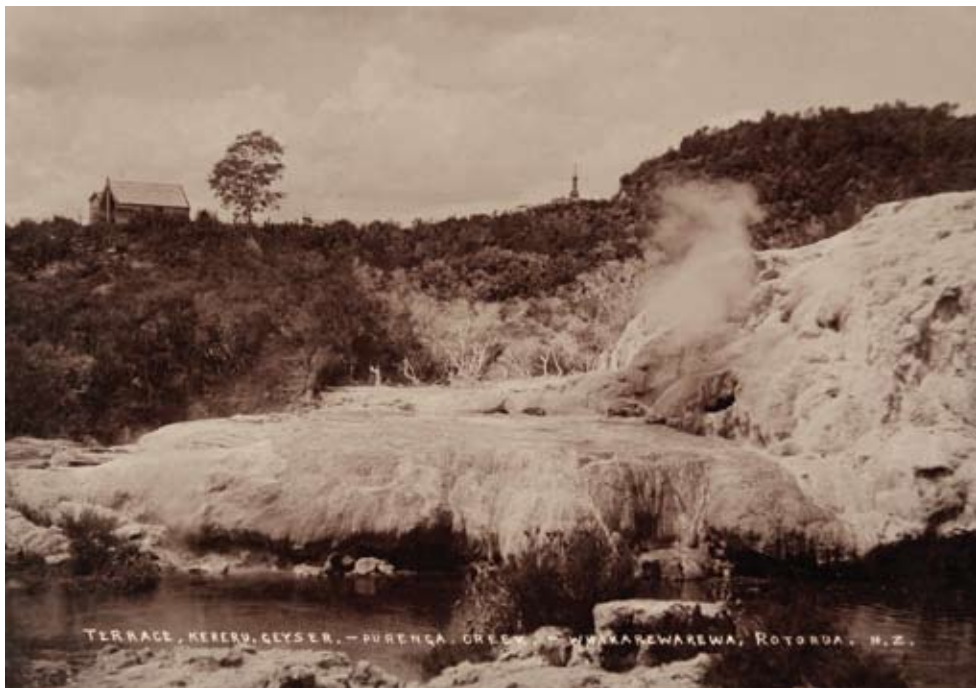
POPA - GEYSER - AKAWA ST. LOOKING WEST - ROTORUA, N.Z. 1910.



PRINTED WALL, NOT SINK, BUT DAILY IN ROCKS AT SIDES.
HAKARANA, SPRING, ROTORUA, N.Z. - 10,000,000 GAL. A DAY. FORCED PARTY TO SWIM IN GEYSERS.



SOUTH AFRICAN WAR MEMORIAL SANATORIUM, GLENHURST, ROTORUA, N.Z. 1914.



TERRACE, KERERU, GEYSER. - PURENCA, GREG. - WHAKAREWAREWA, ROTORUA, N.Z.



1915-6
THE 'BRAIN-POT' & CARETAKERS, WHARE, WHAKAREWAREWA, ROTORUA, N.Z.



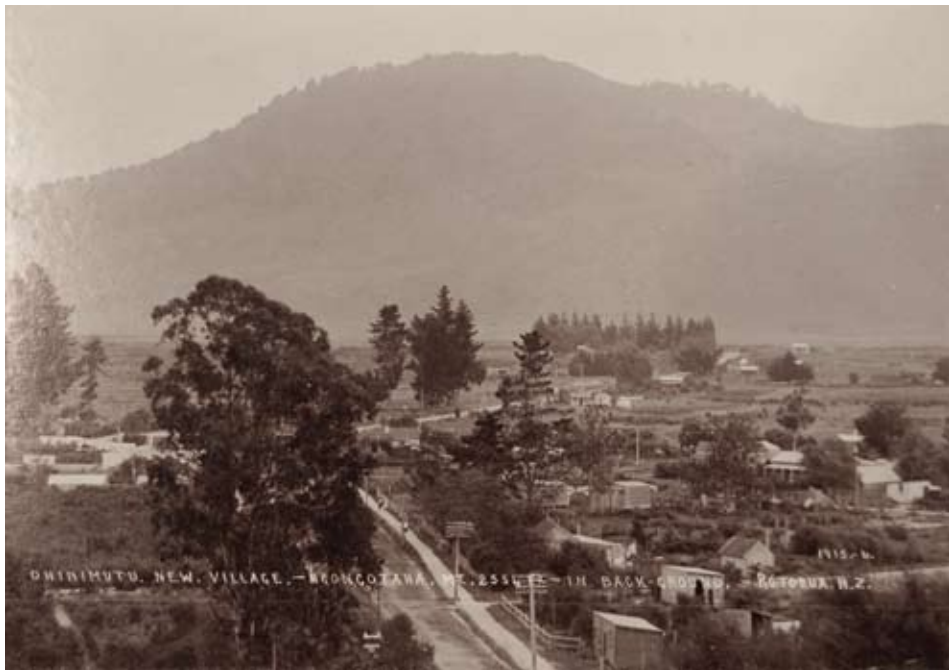
MINIATURE VOLCANO - OHIRIMUTU, ROTORUA, N.Z.

1915-75.



BOILING, MUD, AND OIL POOL, OHIRIMUTU, ROTORUA, N.Z.

1915-8



OHIRIMUTU, NEW VILLAGE. - WONGOHANA, 12,255 FT. - IN BACK GROUND. - ROTORUA, N.Z.

1915-6.



ROTOMAHANA, HOT LAKE - CORRUGATIONS, CAUSED BY RAINS, ON NEW ERUPTED MATTER IN 1908

1916



THE FEATHERS & POWTU GEYSERS, WHAKA, ROTORUA, N.Z. 1915-D.



COPY.
THE WHAKA BASIN - 19 DAYS AFTER ERUPTION - SOUTH ECHO - INFERNO - & BLACK CRATERS.



THE LOBSTER BATH 3. TO 75. FT DEEP - HOT WATER - CURE FOR RHEUMATISM - ROTORUA, N.Z.



TUTANEKAI STREET, - ENTRANCE RAILWAY STATION ROTORUA - 1916



TUTEA, FALL, PUKERANGA ROTOMATIKA, N.Z. 1916.



WILKINSON, ARCH - 1916, ROTOMATIKA, N.Z. 1916.



VIEW OF TARAWEKA, DISTRICT, AFTER 80 YEARS - IN CRATERS TO TOP OF MOUNTAINS, IN DISTRICT OF ROTOMATIKA, N.Z.



WATER-FALL, PURENKA, CREEK, WHAKAREKAREKARE, ROTOMATIKA, N.Z. 1916.





ON THE BEACH - LAKE, ROTORUA, N.Z., 1916



FIVE-STONES, OHAKIMUTU, ROTORUA, N.Z., 1916



MALFROY GEYSER, SANATORIUM, GROUNDS, ROTORUA, N.Z., 1916



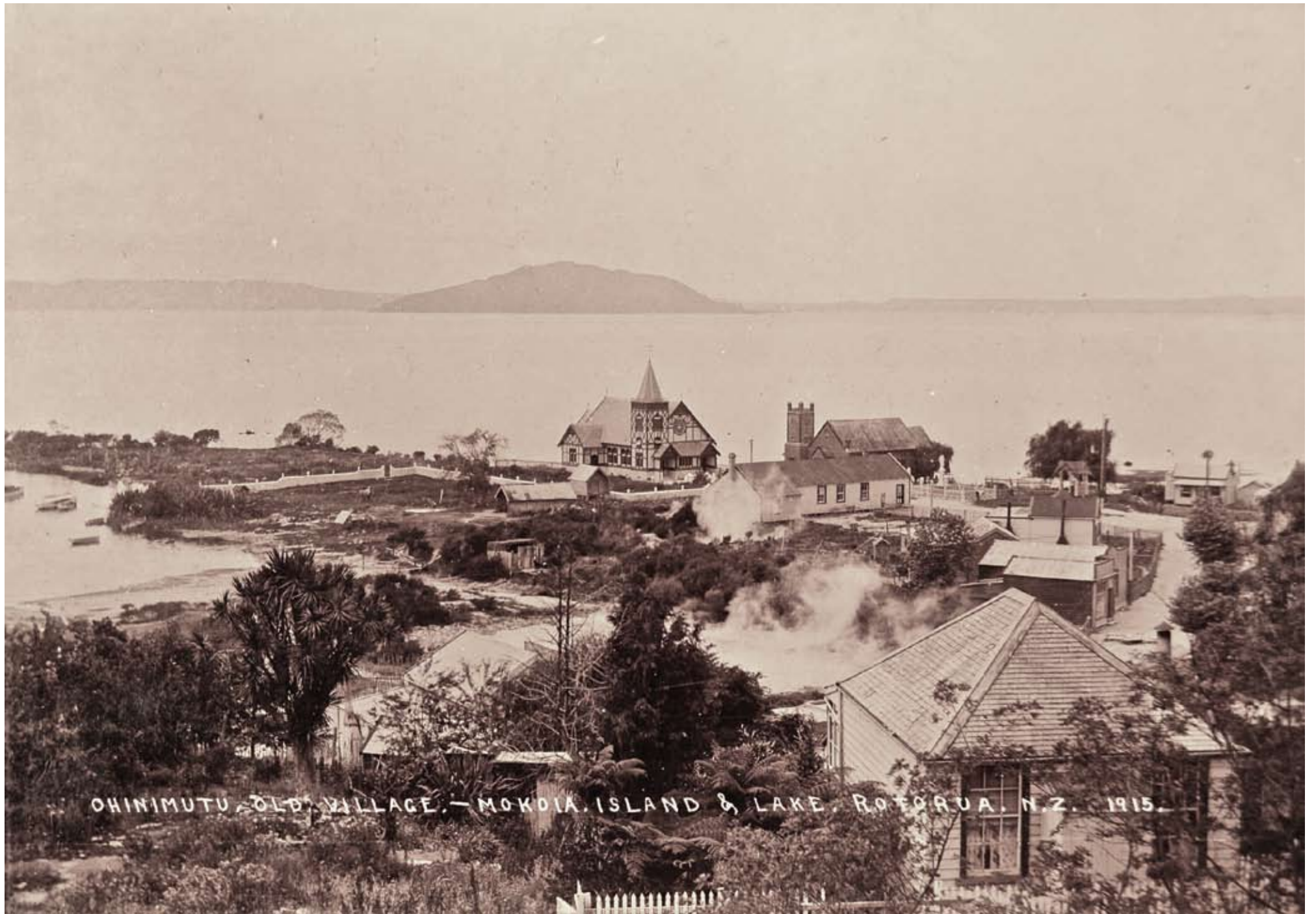
ALMA ARCH, ROTORUA, N.Z., 1916



MAORI, CHILDREN, IN, BATH, OHINIMUTU, ROTORUA, N.Z.

1915-6.





OHINIMUTU OLD VILLAGE. - MOKOIA ISLAND & LAKE ROTORUA, N.Z. 1915.