



International Art Centre

272 Parnell Road Auckland New Zealand Tel +64 9 379 4010
www.fineartauction.co.nz

85 K (KITTY) AIRINI VANE

1891 - 1965

Seventy one works on paper featuring
New Zealand and Foreign subject matter.
Gouache on paper 28 x 44 (average size)
and watercolour

Most signed, some dated

Unframed in storage box, each between conservation tissue

ESTIMATE

\$8,000 - 12,000

REFERENCE

K Airini Vane was the daughter of Captain Gilbert Mair, a hero of the Maori wars and his wife, the artist Kate Sperry who had studied in Rome. Their daughter was born in Wainuiomata in 1891. As a young woman, the outbreak of war in 1914 saw her nursing in Malta. It was here that she met her soldier husband the Hon. Ralph Vane, son of the 9th Baron Of Barnard.

In the 1920s K Airini Vane painted in Tunisia, Canada, USA, Spain, Turkey, Greece, Italy, Monaco and Guatemala. Her work was accepted by the Royal Academy in 1929. The 1930s saw a return to Malta and time spent in both North and South Africa. Returning to New Zealand in 1939 the artist donated proceeds from the sale of her work to the Red Cross and Navy League. During the Second World War K Airini Vane painted and exhibited in New Zealand and Fiji.

Always an inveterate traveller, 1949 saw a return to Europe and North Africa where she worked for a further three years. On her return to New Zealand K Airini vane settled at Langs Beach, Northland. She was a regular exhibitor at the New Zealand Academy of Fine Arts and the Auckland Society of Art until the mid 1950s.

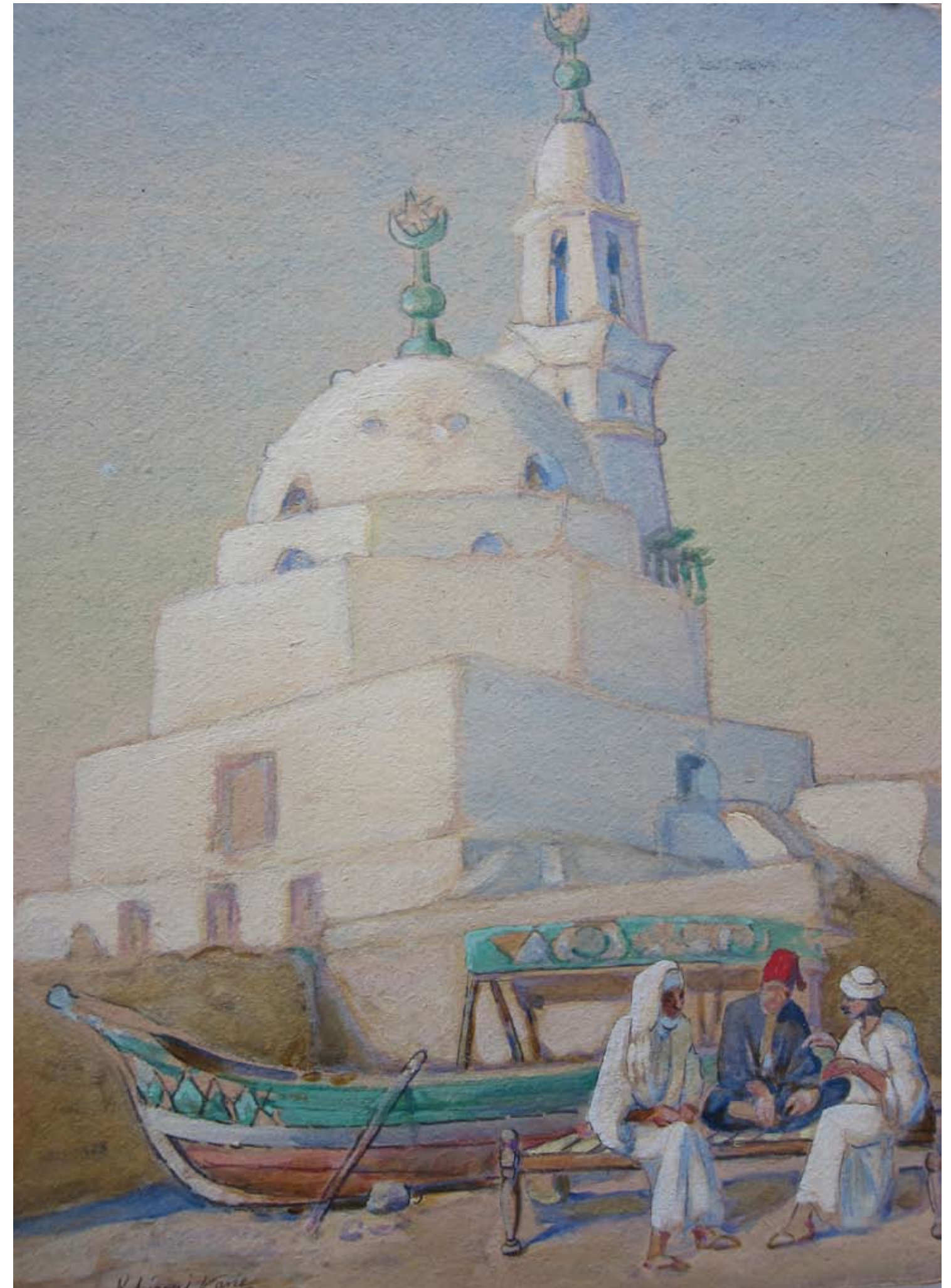
In 1957 K Airini Vane was injured in an accident, sadly ending her career as a successful artist. She died in 1965. She is represented in both public and private collections worldwide.

PROVENANCE

These seventy one works are being sold as one lot on behalf of the *Greg Whitecliffe Memorial Charitable Trust*. The Trust was established in 2002 to support and inspire committed young artists seeking a career in the arts.

To this end the Trust has supplied eleven promising Year Eight students from various intermediate schools with art materials. It has assisted with funding to enable two artists/designers set up their first business. On the 100th Anniversary of Parnell Primary School the Trust supported a creative initiative which involved first year Whitecliffe students interested in teaching art. Recently, twelve Whitecliffe BFA students received scholarships to attend workshops in New York, San Francisco and Shanghai.

Michele Whitecliffe is passionate about supporting young, emerging artists. All funds raised from the sale of works by K Arini Vane will be used to create scholarships and fund equipment to assist these talent young people make a difference in our community.





Coastline



North African Monastery



Castle with Dinghies



Dutch Landscape



Rakaia River



Bush Stream



Musta Multa



Mountain Range South Island



Cactus Hill and Sunset



Victoria Falls



Lake St Anthony








International Art Centre
 272 Parnell Road Auckland New Zealand Tel +64 9 379 4010
www.fineartauktion.co.nz



South Island Scene



Alpine Resort



Polynesian Princess



Southern Alps



Tunisian Monastery



Waterwheel Tunisia



Musta Multa



North African Monastery



Cinque Terrace



Wanaka



City Gates



Pyramids Giza



Lillies

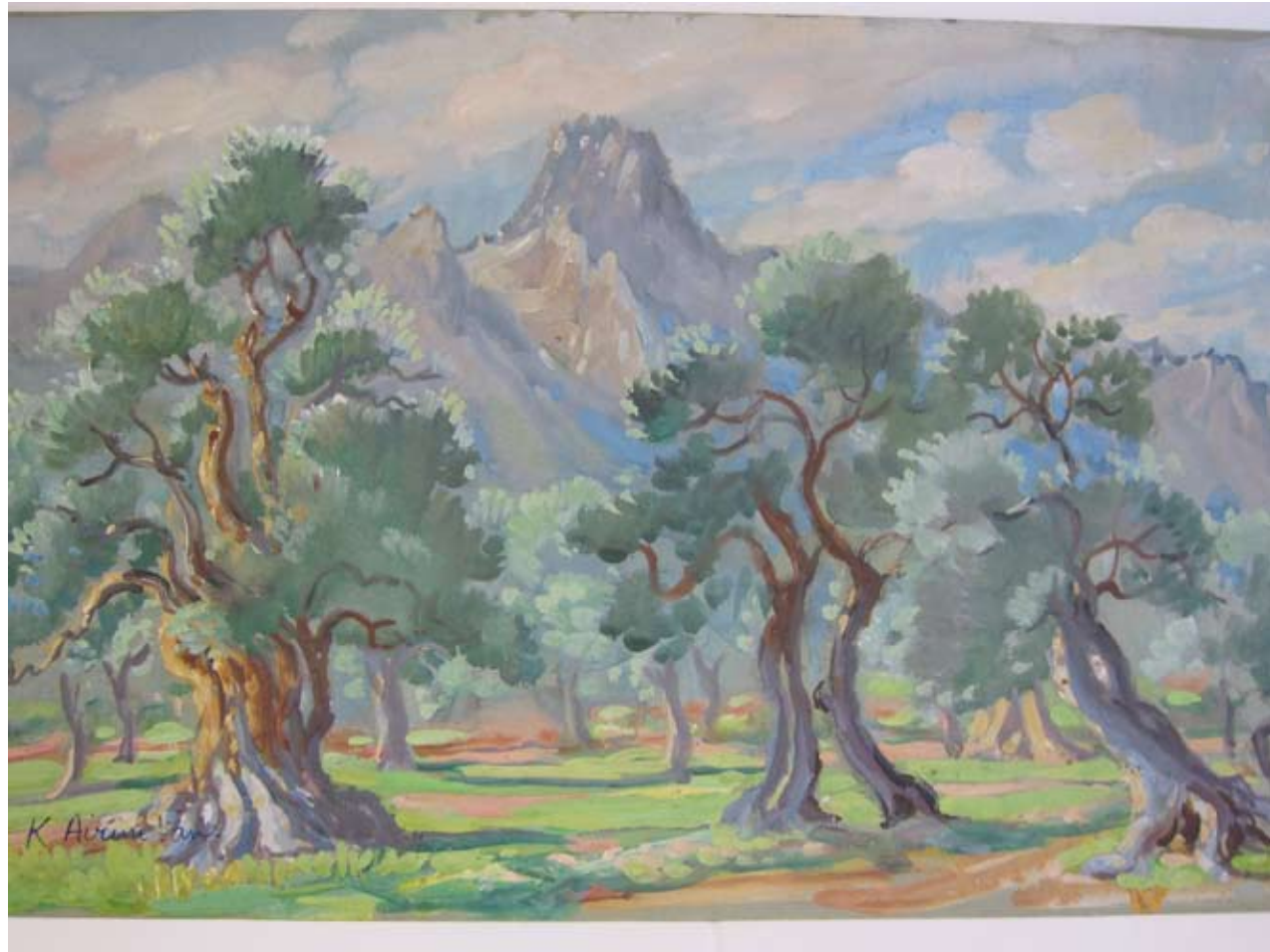


Tunisia



Mountains






International Art Centre
272 Parnell Road Auckland New Zealand Tel +64 9 379 4010
www.fineartauction.co.nz

*71 Sheets of paper
A few are double sided*





St Michaels Mount from Bracali fields

