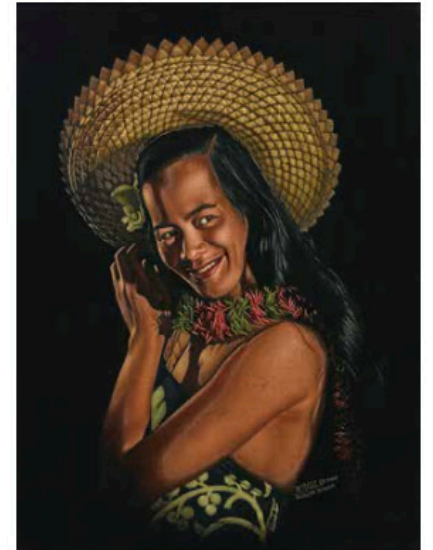




FIVE WORKS BY CHARLES MCPHEE

- 89** **CHARLES MCPHEE** (1910 - 2002)  
*Elizabeth Tetuanui*  
 Oil on velvet 82 x 67  
 Signed, inscribed *Elizabeth Tetuanui*  
 & dated 1959  
 \$2,500 - 3,500

Charles McPhee was one of the first artists to paint on black velvet. He studied with the founder of this genre, American artist Edgar Leeteg (1904-1954). In the early years after WWII, painting on velvet was a unique new technique which enabled the artist to render life forms in a tactile and lifelike way. In the 1960s Charles McPhee enjoyed immense success and personal popularity. He was inundated with commissions and his exhibitions were sell outs.



89

Whilst studying with Leeteg, Charles McPhee met Tahitian beauty and artist's model, Elizabeth Tetuanui. Elizabeth became his wife and long-time muse. On returning to New Zealand they established their home and studio in the Waitakeres.

A 1998 television documentary, *Velvet Dreams*, by award-winning Samoan director, Sima Urale featured the artist and his works. Charles died at the age of 92.



90

- 90** **CHARLES MCPHEE** (1910 - 2002)  
*Elizabeth Tetuanui*  
 Oil on velvet 82 x 67  
 Signed, inscribed *Elizabeth Tetuanui*  
 & dated 1959  
 \$2,500 - 3,500